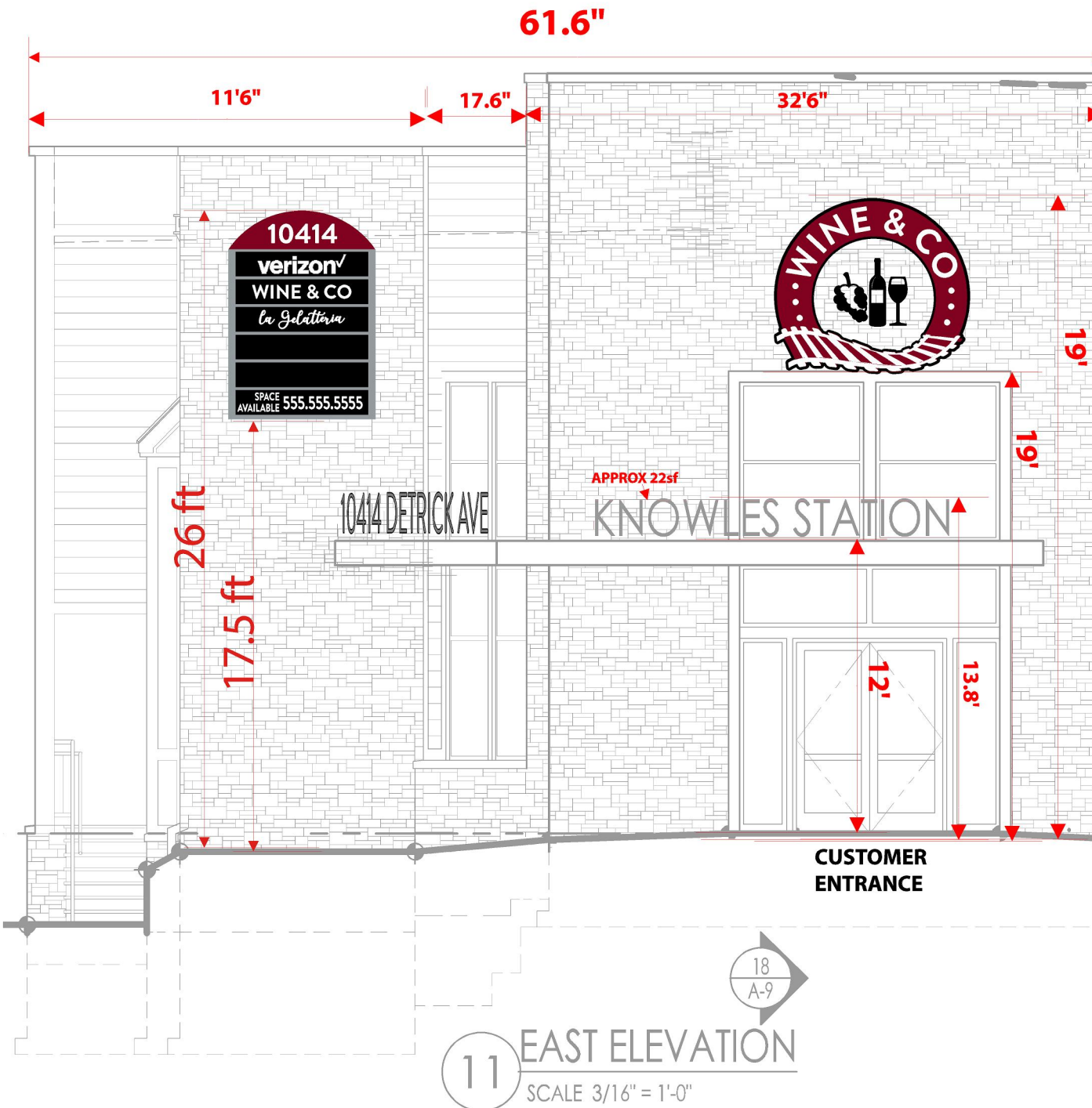
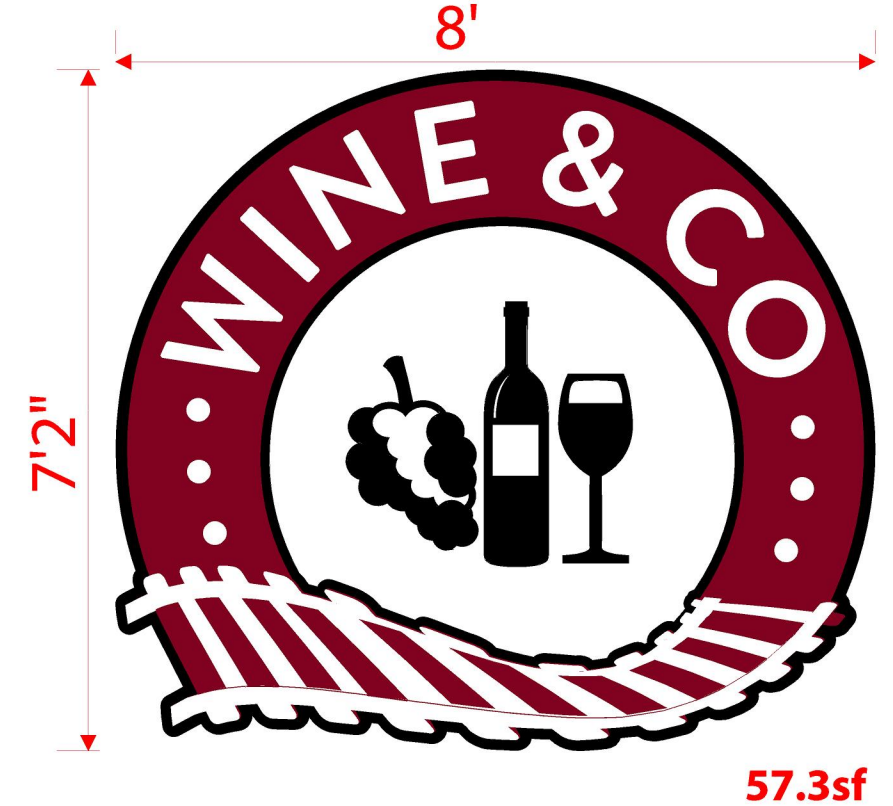


Front Entrance Signs

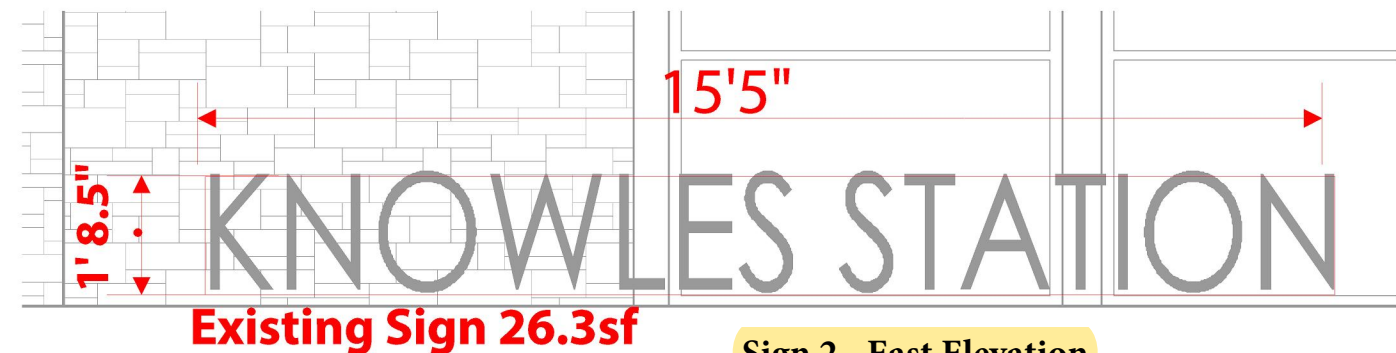
96"w Illuminated Logo; 72"w x 102"h Illuminated Directory Light box (6 inserts)



Sign 4 - East Elevation



Sign 3 - East Elevation



Sign 2 - East Elevation

**This is a Draft Mockup ONLY,
NOT A FORMAL PROOF.**

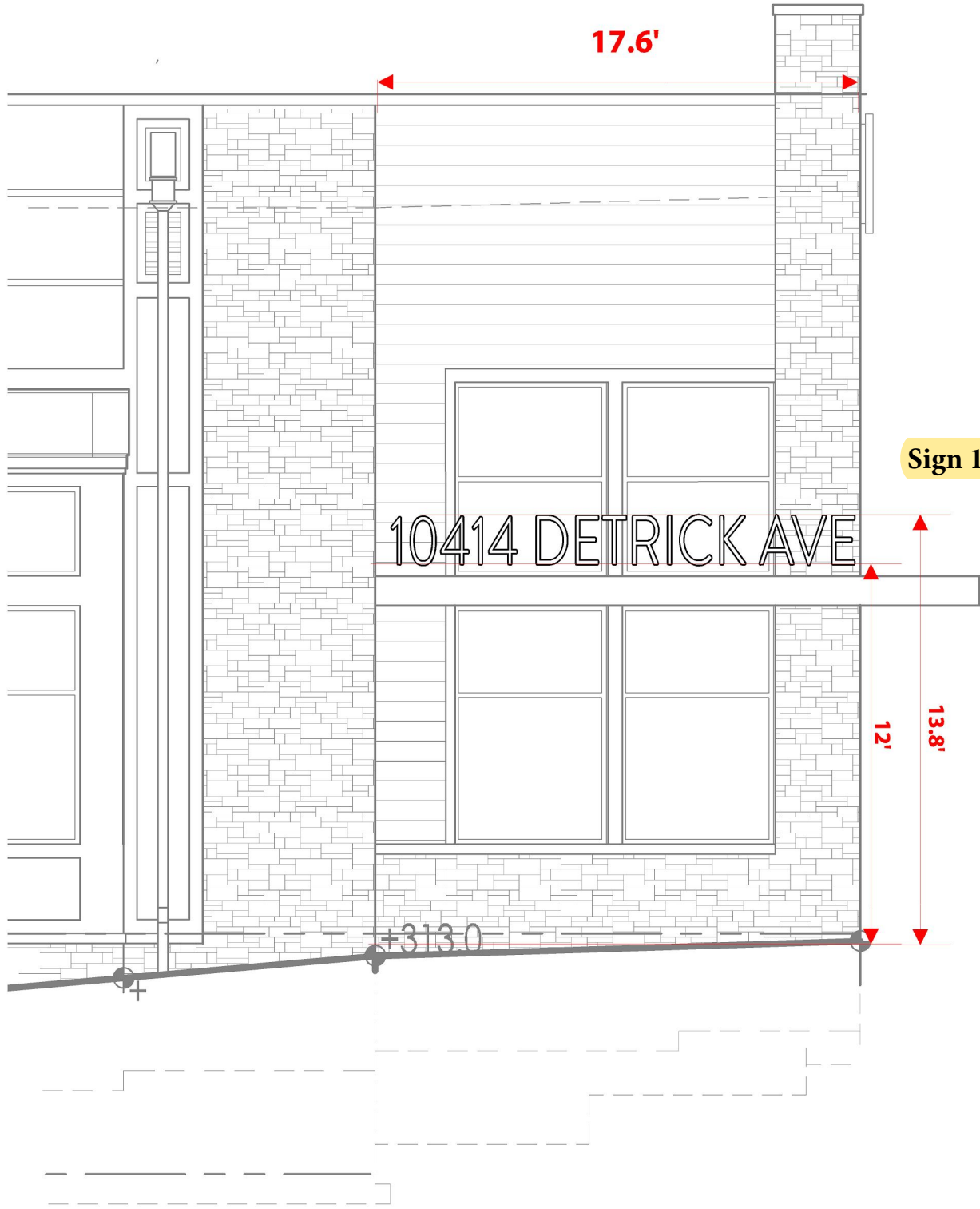
The artwork used in this rendering is not necessarily print quality and for display purposes only. Artwork **MUST** be provided in high resolution format, appropriate for large format printing. Preferred files types are: eps or pdf vector files. 300 dpi jpeg files are also acceptable for certain applications. Additional fees may apply if artwork is unacceptable.

NOTES:

- THIS PROOF PORTRAYS A REASONABLE REPRESENTATION OF THE FINAL PRODUCT.
- PROOF COLORS MAY NOT BE AN ACCURATE REPRESENTATION OF THE FINAL PRODUCT.
- MONITORS AND PRINTERS SHOULD NOT BE RELIED UPON FOR COLOR ACCURACY.
- A COLOR SAMPLE CAN BE PROVIDED AT AN ADDITIONAL COST.

This design is the sole property of Signarama Silver Spring (SAR). Duplication or use of this design, or of any salient elements within this design, in any item made by any other company without the express written permission of SAR is prohibited by law.

Front Entrance Address Detail
Existing dimensional Address on Awning 26.6 sf

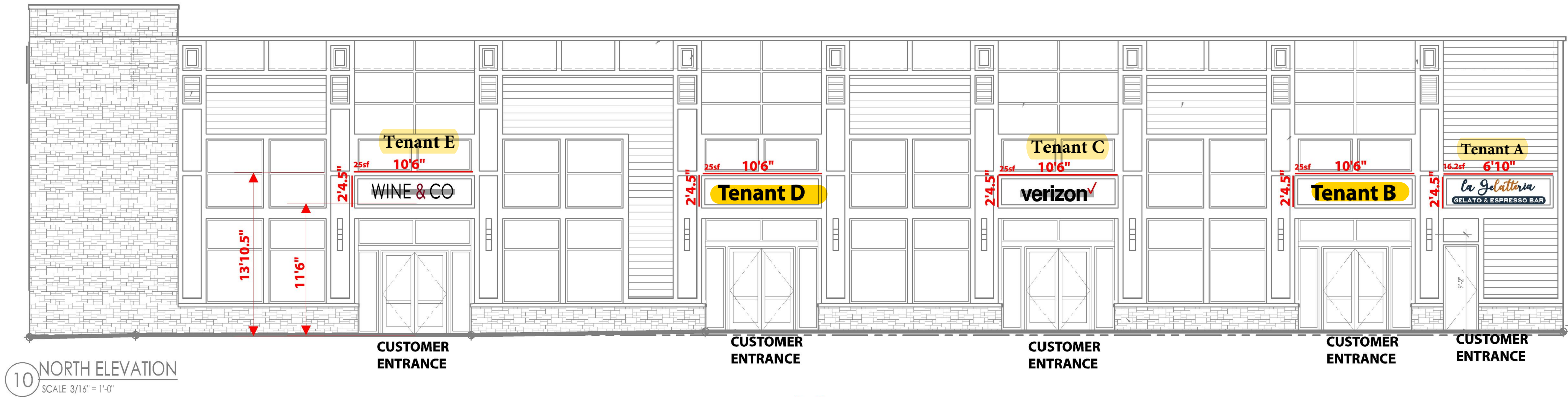


NORTH ELEVATION

Tenant Signage

Channel letters on raceway or pin mount, translucent cut vinyl, front-lit (Black will be day-night vinyl)

Note: Linear width for all tenant building frontage 28 linear ft, except Wine & Co which is 46.7 linear ft



**This is a Draft Mockup ONLY,
NOT A FORMAL PROOF.**

The artwork used in this rendering is not necessarily print quality and for display purposes only. Artwork **MUST** be provided in high resolution format, appropriate for large format printing. Preferred files types are: eps or pdf vector files. 300 dpi jpeg files are also acceptable for certain applications. Additional fees may apply if artwork is unacceptable.

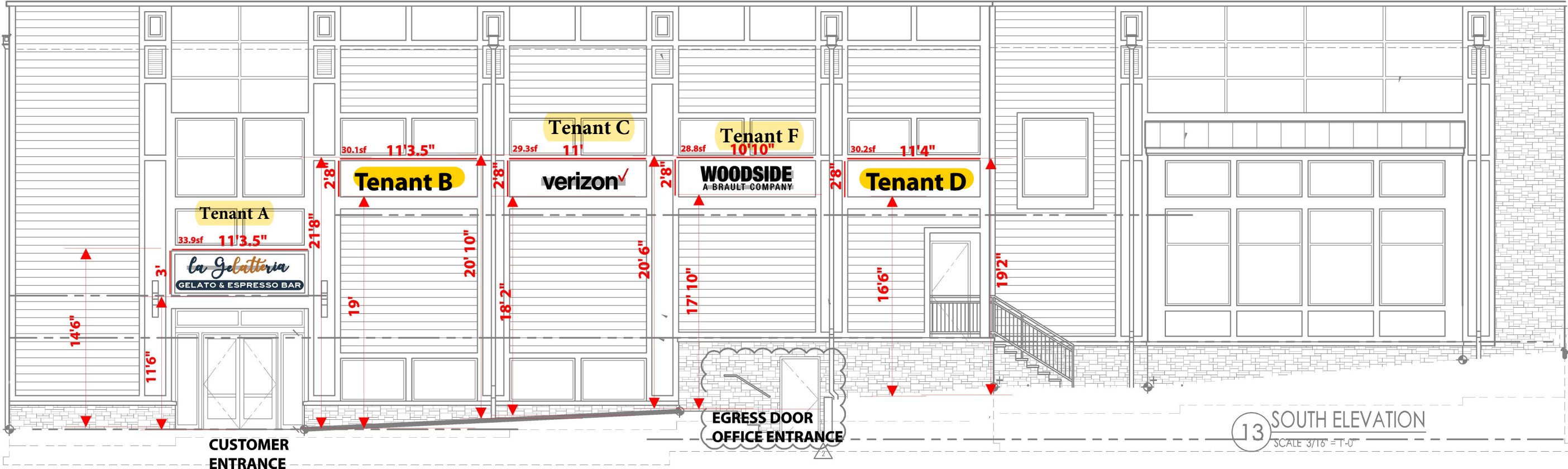
- NOTES:**
- THIS PROOF PORTRAYS A REASONABLE REPRESENTATION OF THE FINAL PRODUCT.
 - PROOF COLORS MAY NOT BE AN ACCURATE REPRESENTATION OF THE FINAL PRODUCT.
 - MONITORS AND PRINTERS SHOULD NOT BE RELIED UPON FOR COLOR ACCURACY.
 - A COLOR SAMPLE CAN BE PROVIDED AT AN ADDITIONAL COST.

This design is the sole property of Signarama Silver Spring (SAR). Duplication or use of this design, or of any salient elements within this design, in any item made by any other company without the express written permission of SAR is prohibited by law.

SOUTH ELEVATION

Tenant Signage

Channel letters on raceway or pin mount , translucent cut vinyl, front-lit (Black will be day-night vinyl)



 **Signarama**
Silver Spring
The way to grow your business.
8930 BROOKVILE ROAD • SILVER SPRING, MD 20910
301-273-3462 FAX: 301-273-3495
info@signarama-silverspring.com

**This is a Draft Mockup ONLY,
NOT A FORMAL PROOF.**

The artwork used in this rendering is not necessarily print quality and for display purposes only. Artwork **MUST** be provided in high resolution format, appropriate for large format printing. Preferred files types are: eps or pdf vector files. 300 dpi jpeg files are also acceptable for certain applications. Additional fees may apply if artwork is unacceptable.

- NOTES:**
- THIS PROOF PORTRAYS A REASONABLE REPRESENTATION OF THE FINAL PRODUCT.
 - PROOF COLORS MAY NOT BE AN ACCURATE REPRESENTATION OF THE FINAL PRODUCT.
 - MONITORS AND PRINTERS SHOULD NOT BE RELIED UPON FOR COLOR ACCURACY.
 - A COLOR SAMPLE CAN BE PROVIDED AT AN ADDITIONAL COST.

This design is the sole property of Signarama Silver Spring (SAR). Duplication or use of this design, or of any salient elements within this design, in any item made by any other company without the express written permission of SAR is prohibited by law.